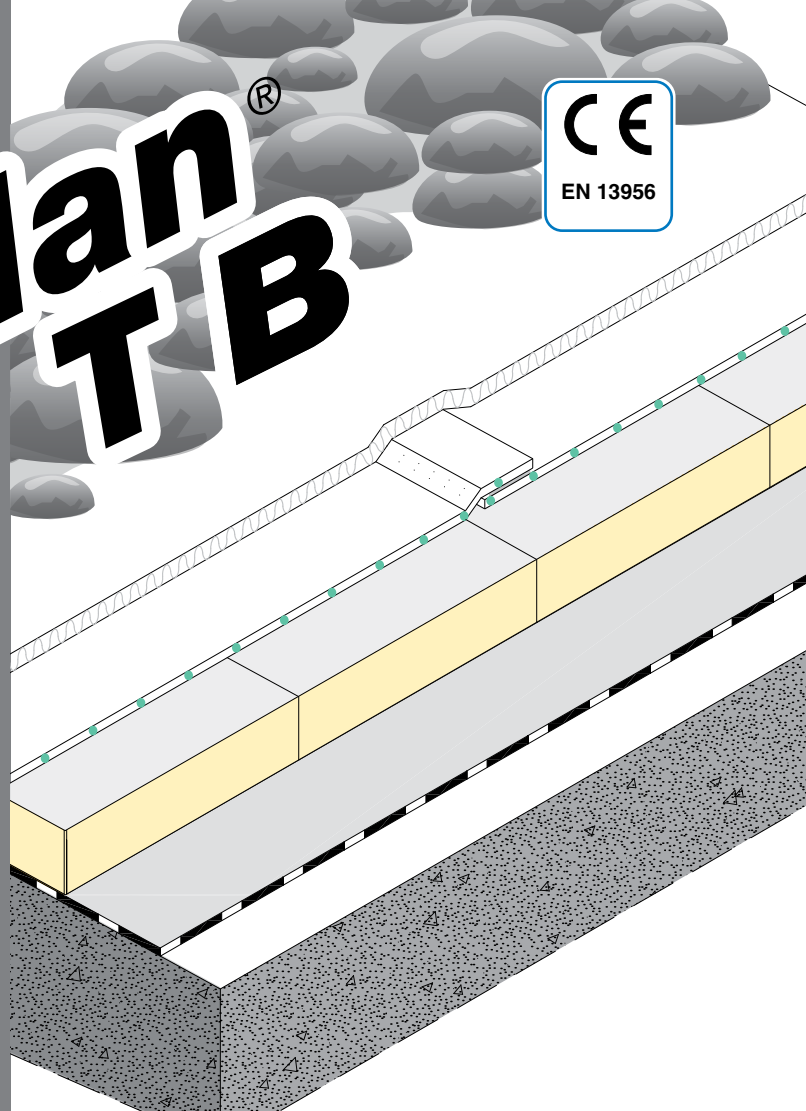


# Mapeplan<sup>®</sup> T B



## Roofing and waterproofing synthetic membrane



### DESCRIPTION

Mapeplan<sup>®</sup> T B is a synthetic roofing waterproofing membrane in flexible polyolefin TPO/FPO produced in one **multi-extrusion coating process**, with high quality raw materials, reinforced with glass mat.

Mapeplan<sup>®</sup> T B is conform to EN 13956 standard.

### APPLICATION FIELDS

Mapeplan<sup>®</sup> T B is suitable for loose laid ballasted, utility deck (pedestrian - parking) and roof garden systems.

It is resistant to ultraviolet rays.

### NORMS AND CERTIFICATIONS

CE conformity marking according to EN 13956 standard.

ISO 9001 quality system certification.

ISO 14001 environmental system certification.

BBA Agrément Certification.

FLL root resistance certification.

Mapeplan<sup>®</sup> T B can contribute in the collection of LEED (Leadership in Energy and Environmental Design) Credits.



### TECHNICAL CHARACTERISTICS

Mapeplan<sup>®</sup> T B is a high standard quality product; it performs very good mechanical properties, best workability as well as excellent welding characteristics.

### - High solar reflectance

- High workability and weldability
- Resistant to microbiological attacks and root-resistant
- High mechanical resistance
- Excellent flexibility at low temperatures
- Excellent resistance to ageing
- Excellent resistance to UV rays and to weathering
- Vapour permeability
- Formulation without plasticizers

### PACKAGING

<b>PALLET</b>	14 rolls per pallet
<b>LENGTH OF ROLLS</b>	20 m 15 m (according to the thickness)
<b>WIDTH OF ROLLS</b>	2,00 m

### STORAGE

Store horizontally, shelter from sun and bad weather in a dry place.

### SAFETY INSTRUCTIONS

Mapeplan<sup>®</sup> T B is not considered dangerous according to the current safety regulation for the classification of goods and substances.

The safety datasheet is therefore not compulsory for the purchase, transport and application.

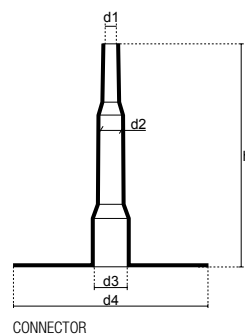
Precaution during use: ensure a proper change of air if the application is made in closed working environments.

TECHNICAL DATA				
PRODUCT PROPERTIES				
Product	Waterproofing membrane in TPO/FPO (flexible polyolefin), reinforced with glass mat.			
Colour	Top layer: high reflectance Smart White Bottom layer: black			
European standard	EN 13956 Certificate also EN 13361 - EN 13362 - EN 13491 - EN 13492			
CHARACTERISTICS STANDARDS - M.U.		Mapeplan® T B 15	Mapeplan® T B 18	Mapeplan® T B 20
Visible defects	EN 1850-2	None	None	None
Length (m)	EN 1848-2	20 (-0/+5%)	15 (-0/+5%)	15 (-0/+5%)
Width (m)	EN 1848-2	2,00 (-0,5/+1%)	2,00 (-0,5/+1%)	2,00 (-0,5/+1%)
Straightness (mm)	EN 1848-2	≤ 30	≤ 30	≤ 30
Flatness (mm)	EN 1848-2	≤ 10	≤ 10	≤ 10
Mass per unit area (kg/m <sup>2</sup> )	EN 1849-2	1,5 (-5/+10%)	1,8 (-5/+10%)	2,0 (-5/+10%)
Effective thickness (mm)	EN 1849-2	1,5 (-5/+10%)	1,8 (-5/+10%)	2,0 (-5/+10%)
TECHNICAL CHARACTERISTICS		Mapeplan® T B 15	Mapeplan® T B 18	Mapeplan® T B 20
Watertightness EN 1928 B Method		Watertight	Watertight	Watertight
Reaction to fire EN 13501-1		Class E	Class E	Class E
Joint peel resistance EN 12316-2 (N/50mm)		≥ 300	≥ 300	≥ 300
Joint shear resistance EN 12317-2 (N/50mm)		≥ 500	≥ 500	≥ 500
Vapour diffusion resistance EN 1931 (μ)		150000	150000	150000
Tensile strength EN 12311-2 (N/mm <sup>2</sup> )		≥ 9	≥ 9	≥ 9
Elongation at break EN 12311-2 (%)		≥ 550	≥ 550	≥ 550
Resistance to impact - rigid support (A method) - flexible support (B method) EN 12691 (mm)		≥ 600 ≥ 1100	≥ 800 ≥ 1500	≥ 900 ≥ 1750
Resistance to static load - flexible support (A method) - rigid support (B method) EN 12730 (kg)		≥ 15 ≥ 20	≥ 15 ≥ 25	≥ 15 ≥ 30
Tear resistance EN 12310-2 (N)		≥ 150	≥ 150	≥ 150
Dimensional stability EN 1107-2 (%)		≤ 0,2	≤ 0,2	≤ 0,2
Foldability at low temperatures EN 495-5 (°C)		≤ -40	≤ -40	≤ -40
UV exposure EN 1297 (5000 h)		grade 0 - passes	grade 0 - passes	grade 0 - passes
Exposure/compatibility to aged bitumen (possible colour variations)		compatible	compatible	compatible
Resistance to root penetration EN 13948 - Test FLL		conform	conform	conform
SRI (Solar Reflectance Index) ASTM E1980		102	102	102

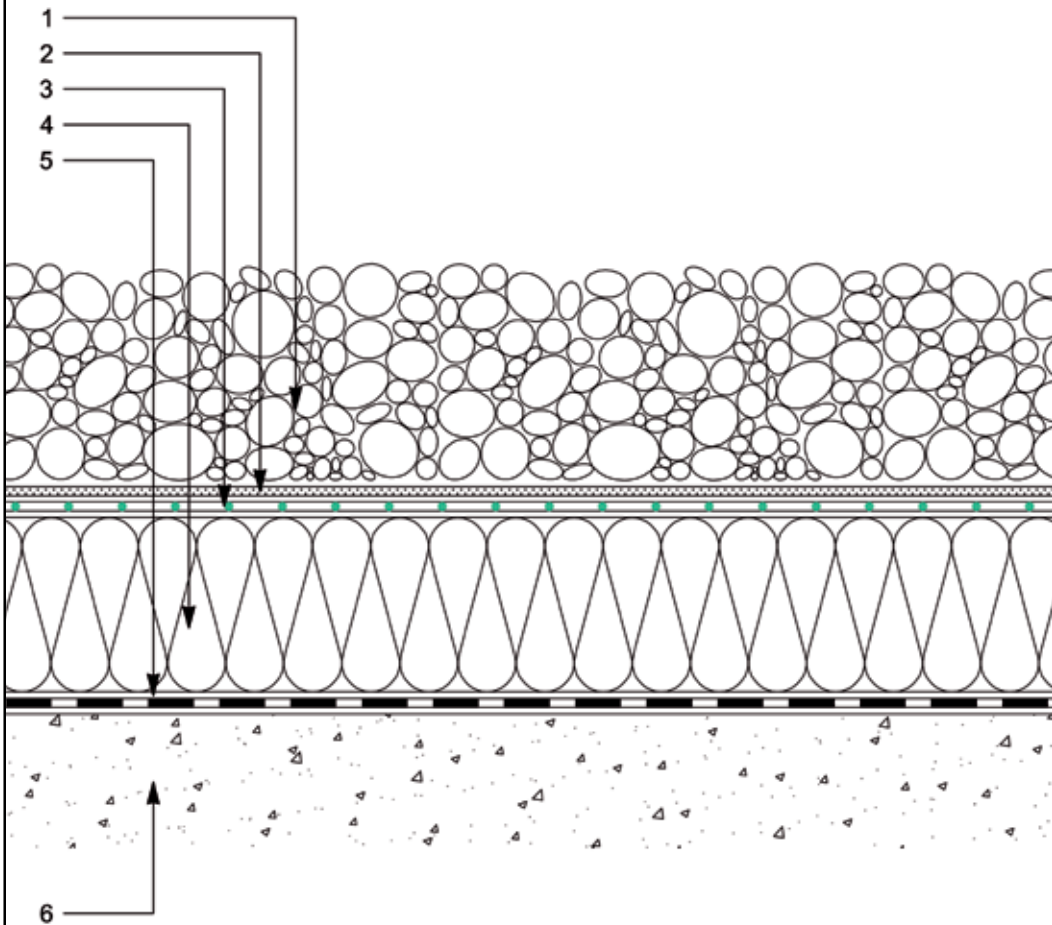
Considering the various situations of use, the numerous types of support surfaces and the possibilities for use inside COMPLEX WATERPROOF LAYERING, Polyglass SpA cannot assume any liability for damages derived from the product's results in terms of function or aesthetics.  
Technical Data Sheet Rev. 1/17

## MAPEPLAN® T accessories

- Mapeplan® T D, membrane for details and particulars
- Mapeplan® T, metal sheets coupled to Mapeplan® T membrane
- Mapeplan® T, internal and external prefabricated corners
- Mapeplan® ADS 300, contact adhesives
- Mapeplan® T Seam Prep, liquid preparation overlaps
- Mapeplan® T Cleaner, cleaning liquid
- Mapeplan® T, outlets and special prefabricated pieces



## MAPEPLAN® T B LAYERING



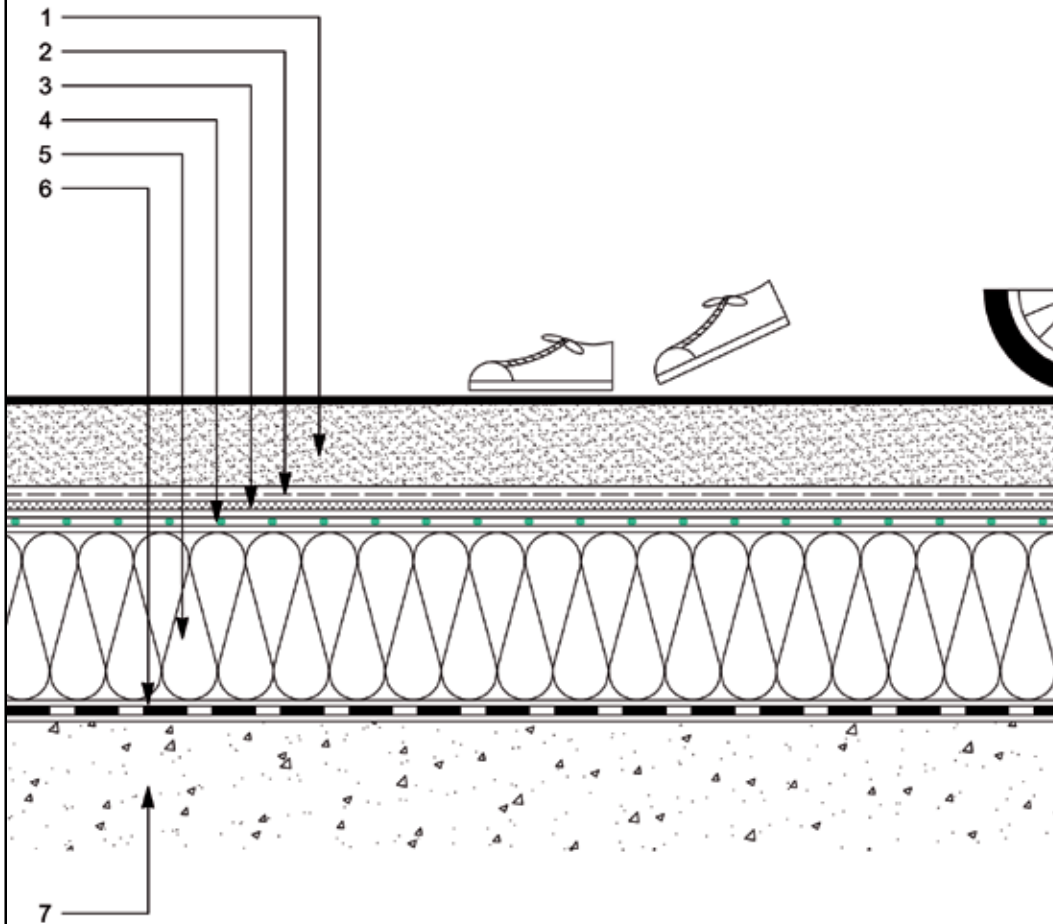
- **High solar reflectance**
- *Environmental friendly*
- *Resistant to ageing processes*
- *Root-resistant*
- *Resistant to microbiological attacks*
- *Flexible at low temperatures*
- *Puncture resistant*
- *UV-resistant*
- *High workability and weldability*
- *Vapour permeable*
- *Formulation without plasticizers*
- *Dimensionally stable*
- *Excellent fire behaviour*

Technical specifications of product are available on the technical books.  
References for this product are available on request and on Mapei and polyglass web sites at the following addresses [www.mapei.it](http://www.mapei.it), [www.mapei.com](http://www.mapei.com) and [www.polyglass.com](http://www.polyglass.com)

### LEGEND

1. *Layer of ballast, gravel*
2. *Protective layer (for example POLYDREN)*
3. *MAPEPLAN® T B, roofing membrane*
4. *Thermal insulation*
5. *Vapour control layer (for example POLYVAP)*
6. *Substrate*

## MAPEPLAN® T B LAYERING



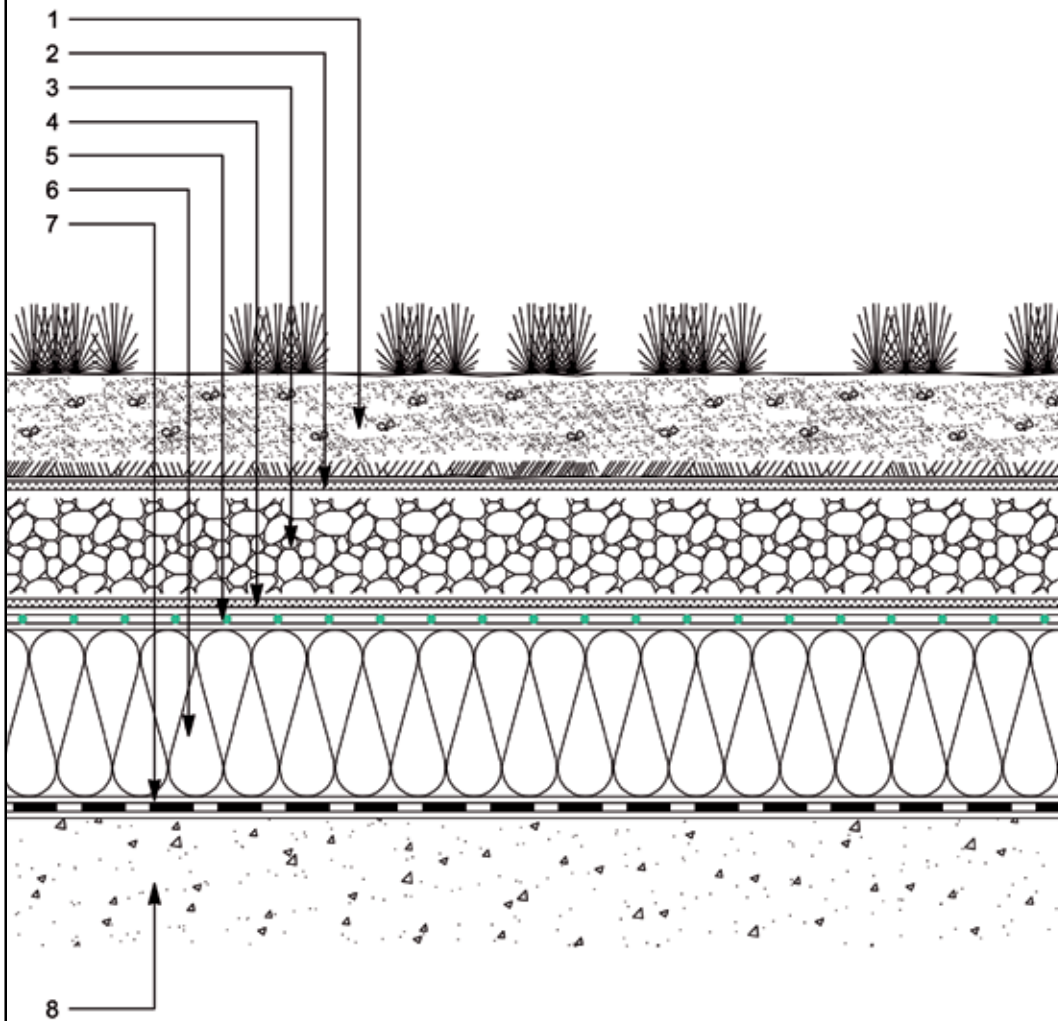
- **High solar reflectance**
- *Environmental friendly*
- *Resistant to ageing processes*
- *Root-resistant*
- *Resistant to microbiological attacks*
- *Flexible at low temperatures*
- *Puncture resistant*
- *UV-resistant*
- *High workability and weldability*
- *Vapour permeable*
- *Formulation without plasticizers*
- *Dimensionally stable*
- *Excellent fire behaviour*

Technical specifications of product are available on the technical books.  
References for this product are available on request and on Mapei and polyglass web sites at the following addresses [www.mapei.it](http://www.mapei.it), [www.mapei.com](http://www.mapei.com) and [www.polyglass.com](http://www.polyglass.com)

### LEGEND

1. *Layer driveway, cement screed with a wear layer*
2. *Antisoaking layer  
(for example MAPEPLAN® PE micro-perforated)*
3. *Protection layer (for example POLYDREN)*
4. *MAPEPLAN® T B, roofing membrane*
5. *Thermal insulation*
6. *Vapour control layer  
(for example POLYVAP)*
7. *Substrate*

## MAPEPLAN® T B LAYERING



- **High solar reflectance**
- *Environmental friendly*
- *Resistant to ageing processes*
- *Root-resistant*
- *Resistant to microbiological attacks*
- *Flexible at low temperatures*
- *Puncture resistant*
- *UV-resistant*
- *High workability and weldability*
- *Vapour permeable*
- *Formulation without plasticizers*
- *Dimensionally stable*
- *Excellent fire behaviour*

Technical specifications of product are available on the technical books.  
References for this product are available on request and on Mapei and polyglass web sites at the following addresses [www.mapei.it](http://www.mapei.it), [www.mapei.com](http://www.mapei.com) and [www.polyglass.com](http://www.polyglass.com)

### LEGEND

1. *Growth medium*
2. *Filter layer (for example POLYDREN)*
3. *Drainage layer*
4. *Protective layer (for example POLYDREN)*
5. *MAPEPLAN® T B, roofing membrane*
6. *Thermal insulation*
7. *Vapour control layer (for example POLYVAP)*
8. *Substrate*



---

**MAPEPLAN range is produced by:**



**Registered Office: Viale Jenner, 4 - 20159 MILANO**

**Head Office: Via dell'Artigianato, 34 - 31047 Ponte di Piave (TV) - Italia  
Tel. +39 04227547 - Fax +39 0422854118 - www.polyglass.com - info@polyglass.it**